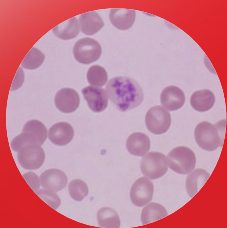


### 5 Part Differential Hematology Analyzer

- ▶ 28 Reportable & 6 RUO\* Parameters including Retic\_Abs, Retic% as well as IRF
- ▶ Flow Cytometry (FCM) and Multi Angle Scatter Separation (MASS) Technology
- ▶ Unique Resistant RBC Mode
- ▶ Throughput of 60 Sample / Hour
- ▶ Storage of 2,00,000 Results with Histogram & Scattergrams



With  
**RETICULOCYTE**



# BEACONIC

## 5part<sup>+</sup>

- ▶ 28 Reportable & 6 RUO\* Parameters with 2 Histograms & 2 Scattergrams
- ▶ Reticulocyte count with RETIC\_ABS, Retic% & IRF
- ▶ Impedance method for RBC & PLT counting
- ▶ Combination of WIC & WOC methods for WBC Counting
- ▶ Cyanide Free Reagent for HGB measurement
- ▶ Throughput of 60 sample / Hour
- ▶ Storage of 2,00,000 results with histograms & scattergrams
- ▶ Supports Variety of External color printers
- ▶ Supports HIS/LIS & HL7 Protocols
- ▶ Compact size design





### **Laser Scatter**

Multi – angle scatter separation technology (MASS)



### **Digital Sheath Flow Regulation**

Use of only sheath flow reagent for WBC 5 Part  
Chemical Dye free Technology



### **Separation System**

Use of motor & syringes for separation  
Ceramic Syringes & high precision motors



### **Electronics & Mechanical Components**

Use of Best Quality Time Tested components and materials  
that ensures trouble-free long-lasting performance



### **2D Grams**

2D histograms for RBC & PLT  
2D scattergrams for 5-part WBC differentials including  
Eosinophil & neutrophils



### **Operation Interface**

Simple touchscreen operations with user friendly icons  
Guidance to operator through handy tool icons



### **Quality Control Solutions**

QC programs with 4 options like L-J, X-R, X-B & X  
Third Party QC solutions available

# TECHNICAL SPECIFICATIONS

## Parameters

WBC, LYM%, MON%, NEU%, EOS%, BAS%, LYM#, MON#, NEU#, EOS#, BAS#, RBC, HGB, HCT, MCV, MCH, MCHC, RDW\_CV, RDW\_SD, PLT, MPV, PDW, PCT, P\_LCR, P\_LCC, RETIC%, RETIC\_ABS, IRF

Research Parameters : ALY#, ALY%, LIC#, LIC%, NRBC#, NRBC%

2 Histograms for RBC and PLT

2 Scattergrams : 5-part differential scattergram

Eosinophils and Neutrophil scattergram

## Principles of Operation

WBC/DIFF : Flow Cytometry, Semi-conductor laser light multi-dimensional cell classification

WBC Analysis : Optical and impedance measurement

RBC/PLT Analysis : Impedance method

HGB Test : Cyanide-free reagent colorimetry

## Reagent

Diluent, Sheath, Detergent, Lyse & Cleaner

## Sampling Modes

Whole Blood : 20 $\mu$ L | Pre-Diluted : 20 $\mu$ L

## Throughput

Whole Blood : Up to 60 samples / Hour

Pre-diluted : Up to 60 samples / Hour

## Data Storage

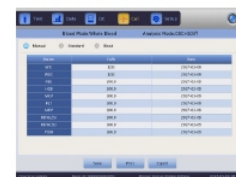
Up to 200,000 sample results with grams

## Alarms

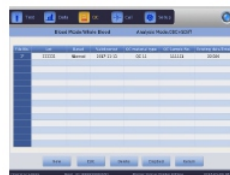
Error Messages



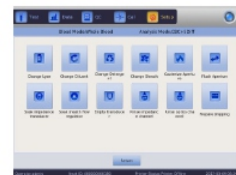
Main Page



Calibration Setting



QC Setting



System Maintenance

## Linearity

Parameter	Linearity Range	Acceptable Limits	Correlation Coefficient R
WBC	$0 \times 10^9 / L \sim 10.0 \times 10^9 / L$	$\pm 0.5 \times 10^9 / L$	$\geq 0.990$
	$10.1 \times 10^9 / L \sim 100.0 \times 10^9 / L$	$\pm 5\%$	
RBC	$0.10 \times 10^{12} / L \sim 100 \times 10^{12} / L$	$\pm 0.05 \times 10^{12} / L$	$\geq 0.990$
	$1.01 \times 10^{12} / L \sim 8.00 \times 10^{12} / L$	$\pm 5\%$	
HGB	0 g/L ~ 70 g/L	$\pm 2$ g/L	$\geq 0.990$
	71 g/L ~ 250 g/L	$\pm 2\%$	
PLT	$0 \times 10^9 / L1 \sim 100 \times 10^9 / L$	$\pm 10 \times 10^9 / L$	$\geq 0.990$
	$101 \times 10^9 / L \sim 1000 \times 10^9 / L$	$\pm 8\%$	

## Display

10.4 inch with touch screen

## Requirements

Voltage	: 110 - 220V (AC), 1 KVA Online UPS with Isolated Transformer
Temperature	: 15°C - 30°C
Humidity	: 30% - 85%
Size	: L 490 mm x H 332 mm x W 459 mm
Weight	: 35 KG



FACTORY & REGISTERED OFFICE :  
424, NEW GIDC, KABILPORE, NAVSARI - 396 424 (GUJ) INDIA  
TEL : +91 - 84889 95888 | E-mail : beacontact@beaconindia.com  
Website : www.beaconindia.com | CIN No. : U24232GJ1990PTC013764



BDPLUMAR23IB5P4-VER00